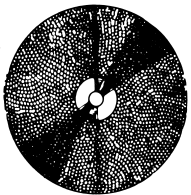




DIAMOND DISCS AND WHEELS

STARLITE DIAMOND DISCS AND WHEELS



151030



151025

A new series of Starlite Diamond Discs and Wheels for precise grinding and finishing of small and miniature parts. Give excellent results on carbide, hardened steel and alloys, ceramics, plastics, etc.

SPECIFICATIONS FOR WHEELS AND DISCS					
PART NO.	SIZE INCHES		SIZE MM		TYPE
	DIAM.	WIDTH	DIAM.	WIDTH	
151005	7/8	.008	22	0.20	flexible full both sides
151010	7/8	.010	22	0.25	flexible full both sides
151015	7/8	.023	22	.058	rigid full both sides
151025	1	.029	25	0.70	rigid cut-off
151030	1	.023	25	0.56	rigid safe one side
151040	1	.029	25	0.70	rigid full both sides

Mandrels may be purchased separately

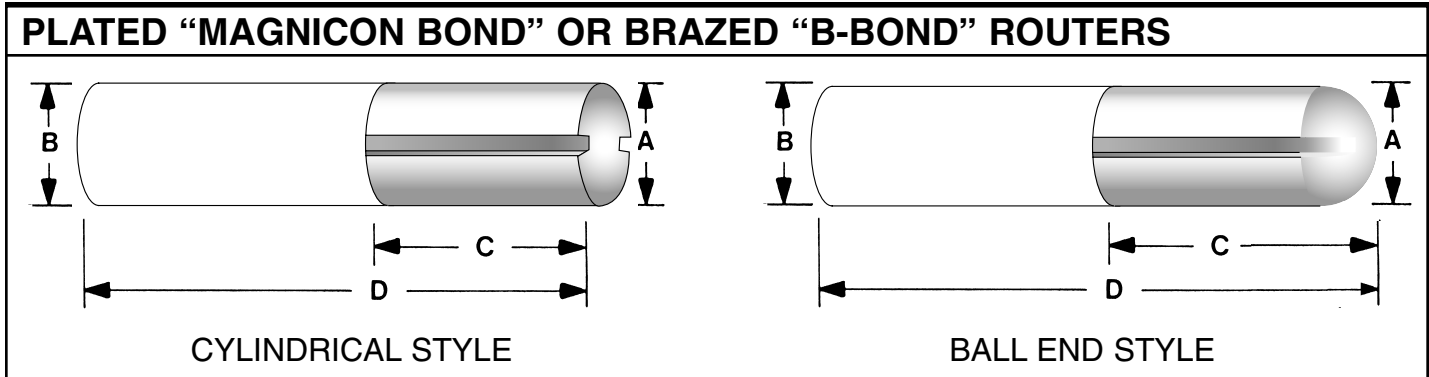
Mandrels		FULL FACE ONE PIECE CUT OFF			
PART NO.	SIZE	PART NO.	DIAM.	WIDTH	SHANK
709528	3/32"	151050	7/8	.025	1/8
709530	1/8"	CBN CUT-OFF			
		251050	7/8	.025	1/8

These discs and wheels are designed to be run on 1/8" or 3/32" diameter shank removable mandrels. These tools should be operated at a minimum of 5,000 R.P.M. in order to prolong tool life. A coolant in mist form should be applied while the tool is cutting. All wheels are medium diamond grit.

DIAMOND PLATED "MAGNICON BOND" OR BRAZED "B-BOND" ROUTERS

FOR USE IN FIBERGLASS, BORON, GRAPHITE, CARBON, CERAMICS AND SIMILAR HIGHLY ABRASIVE MATERIALS

Quantity Discount For Routers: any 6 — 5%; any 12 — 10%; any 25 — 15%; any 50 — 20%



BRAZED		PLATED		A	B	C	D	# OF SLOTS	W	D	GRIT
CYLINDRICAL PART NO.	BALL END PART NO.	CYLINDRICAL PART NO.	BALL END PART NO.								
155200	155300	153125	153905	1/8	1/8	1/2"	2"	2	.031	.031	40
155205	155305	153250	153910	1/4	1/4	3/4"	2-1/2"	2	.046	.046	40
155210	155310	153312	153915	5/16	3/8	1"	3"	2	.093	.093	40
155215	155315	153375	153920	3/8	3/8	1"	3"	2	.093	.093	40
155220	155320	153500	153925	1/2	1/2	1-1/2"	4"	2	.100	.060	40
155225	155325	153625	153930	5/8	1/2	1-1/2"	4"	4	.100	.060	40
155230	155330	153750	153935	3/4	1/2	1"	4"	4	.100	.060	40
155235	155335	153875	153940	7/8	1/2	1"	4"	4	.100	.060	40
155240	155340	153100	153945	1	1/2	1"	5"	4	.100	.060	40
—	—	154060	—	1/2	1/4	1"	3"	2	1/16	1/16	40
—	—	154070	—	1/2	1/4	1"	3"	2	1/16	1/16	60
—	—	154080	—	1/2	1/4	1"	3"	2	1/16	1/16	120
—	—	154090	—	1/4	1/4	3/4"	3"	2	1/16	1/16	60
—	—	154150	—	1/4	1/4	1"	3"	2	1/16	1/16	40
—	—	154160	—	1/4	1/4	1"	3"	—	—	—	40
		PART MM	PART MM	A	B	C	D	#	SLOTS W	D	GRIT
155550	155975	153550	153975	3.0	3.0	12.0	50.8	2	.031	.031	40
155600	155980	153600	153980	6.0	6.0	19.0	63.5	2	.046	.046	40
155650	155985	153650	153985	10.0	10.0	25.0	76.2	4	.093	.060	40
155700	155990	153700	153990	12.0	12.0	38.0	101.6	4	.093	.060	40